

Lead Sheet

Afro Blue

Music by Mongo Santamaria

Afro 6/4

♩ = 162

Intro

B♭-

3 x

Palm Mute

Guitar

2nd x: add Congas & Timbales

7 (11) B♭- dorian

Piano & Bass In

A1, A2 - Verse (Flute)

15 (27) B♭-

Flute: Lead Melody - doubled at the octave

19 (31) G♭ F7 B

Guitar & Rhythm Section

23 (35) B♭-add9

(Piano) (w Rhythm Section)

39

Piano & Bass In

Break

43 B♭-

E♭7

(as Intro)

Guitar & Rhythm Section

Flute & Piano

Rhythm Section only

© 1959 (Renewed 1987) MONGO MUSIC INC. (BMI)/Administered by BUG MUSIC
This Arrangement © 2009 MONGO MUSIC INC.
All Rights Reserved Use by Permission

47 $E\flat 7$

Flute & Piano Rhythm Section Break

A3 - Verse (Vocals)

49 $B\flat-7$ $E\flat-7$ $F-7$ $B\flat-7$ $B\flat-7$ $E\flat-7$ $F-7$ $B\flat-7$

Dream of a land my soul is from. I hear a hand stroke on a drum.

53 $A\flat 7$ $G\flat 6$ $A\flat 7$ $B\flat-$ $G6$ $F6$ $A\flat/E$ E/D $D/B\flat$ E/C $D\flat 7(b9)$

Shades of de light, co - coa hue. Rich as the night, a - fro blue

57 A/B A/E $B/D\flat$ $E\flat 7sus4/A\flat$ $D\flat/E\flat$ F $Gsus4/D$ G A B $B7sus4$ $D\flat 7sus4/E$

Horns In

59 $E\flat 7sus4$ Tutti

ff Rhythm Section

A4 - Verse (Vocals)

61 $B\flat-7$ $E\flat-7$ $F-7$ $B\flat-7$ $B\flat-7$ $E\flat-7$ $F-7$ $B\flat-7$

E - le-gant boy, beau - ti - ful girl. Dan-cing for joy, e - le-gant whirl.

65 $A\flat 7$ $G\flat Maj9$ $A\flat 7$ $B\flat-$ $A\flat 7$ $G\flat Maj9$ $A\flat 7$ $B\flat-$ $A5$ Pickup:

Shades of de light, co - coa hue. Rich as the night, a - fro_ blue. Two young

A5 - Verse (Vocals)

69 $B\flat-7$ $E\flat-7$ $F-7$ $B\flat-7$

lo - vers dance face to face with un - du - la - ting grace. They

71 $B\flat-7$ $E\flat-7$ $F-7$ $B\flat-7$ $A\flat7$

gen - tly sway then slip a - way to some se - clu ded place. Shades of de - light,

74 $G\flat Maj9$ $A\flat7$ $B\flat-$ $A\flat7$ 8^{va} $G\flat Maj9$ $A\flat7$ $B\flat-$

co - coa hue. Rich as the night, a - fro blue._____

A6 - Verse (Instr/Vocals)

77 $D/B\flat$ $D\flat/B\flat$ $B\flat$ $C/B\flat$ $E7(\sharp9)$ $D\flat/E\flat$ $C/E\flat$ $B/E\flat$ $D7(\sharp9)$

expressive

Flute

Lead Melody reharmonized by Horns & Piano

Pedalpoint

81 $A\flat/G$ $A\flat/F$ $A\flat/D\flat$ $C7$ D/F $B\flat13(\flat9)$ E/G $Do7$ $D\flat o$ $C+7$ $D/A\flat$ E/G $G\flat sus2/E$

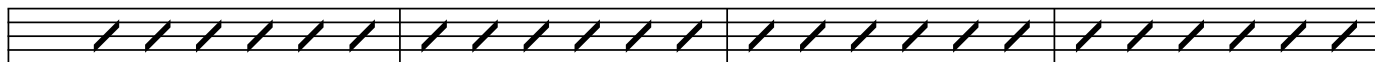
espressivo

Rich as the night, a - fro blue._____

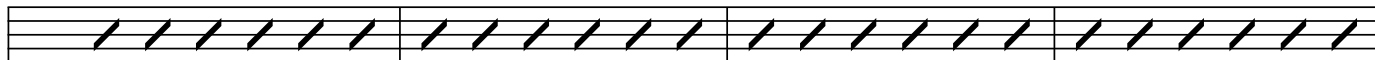
B - Piano Solo

85 $C-7$ $C-7$ $F-7$ $G-7$ $C-7$

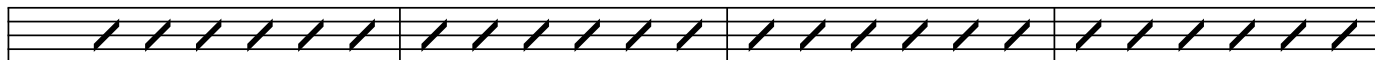
91 B \flat A \flat B \flat C- B \flat G7(b9) B \flat C-



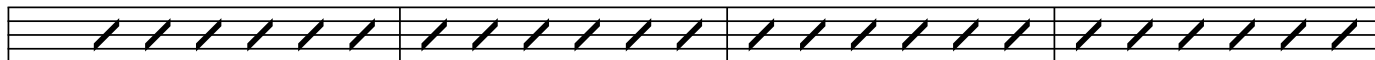
95 C- F- G7(b9) C- \flat C- G7(b9)



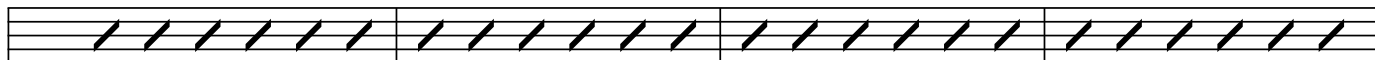
99 F-7 B \flat A \flat B \flat C- B \flat A \flat B \flat C-



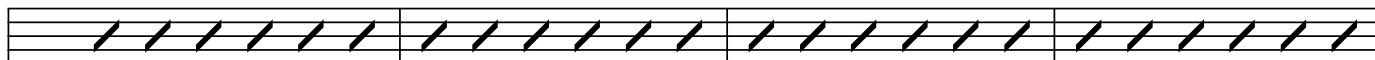
103 C- F-7 G7(\sharp 9) C- F- C-



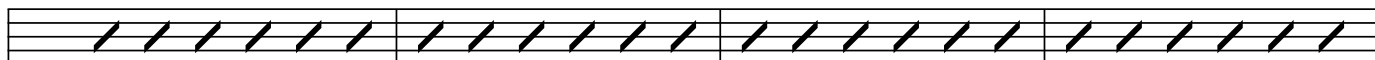
107 B \flat A \flat B \flat C- F-7 A \flat B \flat C-



111 C- F-7 G7(b9) C- C- F-7 G7(b13) C-



115 B \flat A \flat B \flat C- B \flat A \flat B \flat C-



C - Trombone Solo

119 (127)

C-7

F-7

G-7

C-

C-7

F-7

G-7

C-



123 (131)

Bb

Ab

Bb

C-

Bb

Ab

Bb

C-



D - Soneo

135

C-

Akpwón
(Lead singer)

(4:3)



Eh a - fe - re yo

o-gun a - re - re - a fe - re - yo_

A-

(Percussion & Coro)



Coro (Choir)

Eh a - fe - re - yo

Eh a - fe - re - yo

139



a - gua - ni - le o - ni - le_

a - a - gua - ni - le o - ni - le_

C-

F-

G-7/Bb

C-



(Piano in)

143

E - Timba Break



C-

F-

G-7/Bb

C-

Percussion Section

2

147 (155)

F - Timbales Solo

C- F- G-7/B \flat C-

151 (159)

C- F- G-7/B \flat C-

(Piano cont.)

G - Monya

163

C- F- G-7/B \flat C- C- F- G-7/B \flat C-

Horns *ff*

A7 - Last Verse (Vocals)

167

C- F- G-7/B \flat C- C- F-

Dream of a land my soul is from. I hear a hand

170

G-7/B \flat C- B \flat A \flat B \flat C- B \flat

stroke on a drum. Shades of de-light, co-coa hue. Rich as the night,

174

A \flat Maj7 B \flat 7 C-

a - fro blue.

(Piano) Tutti *f*